

CD316 / IGSF8 Antibody (Internal)
Rabbit Polyclonal Antibody
Catalog # ALS11197**Specification**

CD316 / IGSF8 Antibody (Internal) - Product Information

Application	IHC-P
Primary Accession	Q969P0
Reactivity	Human, Rabbit, Monkey, Pig, Bovine
Host	Rabbit
Clonality	Polyclonal
Calculated MW	65kDa KDa
Dilution	IHC-P~~N/A

CD316 / IGSF8 Antibody (Internal) - Additional Information**Gene ID** 93185**Other Names**

Immunoglobulin superfamily member 8, IgSF8, CD81 partner 3, Glu-Trp-Ile EWI motif-containing protein 2, EWI-2, Keratinocytes-associated transmembrane protein 4, KCT-4, LIR-D1, Prostaglandin regulatory-like protein, PGRL, CD316, IGSF8, CD81P3, EWI2, KCT4

Target/Specificity

Human IGSF8. BLAST analysis of the peptide immunogen showed no homology with other human proteins, except SIAH2 (53%).

Reconstitution & Storage

Long term: -70°C; Short term: +4°C

Precautions

CD316 / IGSF8 Antibody (Internal) is for research use only and not for use in diagnostic or therapeutic procedures.

CD316 / IGSF8 Antibody (Internal) - Protein Information**Name** IGSF8**Synonyms** CD81P3, EWI2, KCT4**Function**

Member of the immunoglobulin superfamily (IgSF) that links tetraspanin-enriched microdomains to the actin cytoskeleton and plays several important roles in innate and adaptive immunity (PubMed:11504738, PubMed:14662754). Acts as an inducible receptor of HSPA8 on dendritic cells to enhance the CCL21/SLC-dependent migration of activated mature dendritic cells while attenuating their antigen- specific stimulatory capacities (PubMed:17785435)

target="_blank">17785435). In complex with alpha-actinins ACTN1 and ACTN4, regulates actin dynamics in the immune synapse and subsequent T-cell activation (PubMed:22689882). Inhibits the entry of several viruses such as hepatitis C Virus (HCV) or HIV-1. Mechanistically, promotes a change in CD81 organization at the plasma membrane by significantly restricting its diffusion which in turn influences CD81 interaction with Claudin-1/CLDN1, preventing CLDN1 from acting as a co-receptor required for HCV entry (PubMed:23351194). Accumulates at the presynaptic terminal, the producer cell side of the virological synapse, to prevent HIV-1 Env-mediated cell-cell fusion (PubMed:31757023). Highly expressed on malignant cells with antigen presentation defects, interacts with NK receptor KIR3DL2 to suppress NK-cell cytotoxicity (PubMed:38657602). May participate in the regulation of neurite outgrowth and maintenance of the neural network in the adult brain.

Cellular Location

Cell membrane; Single-pass membrane protein. Note=Colocalizes with CD81 at the immune synapse.

Tissue Location

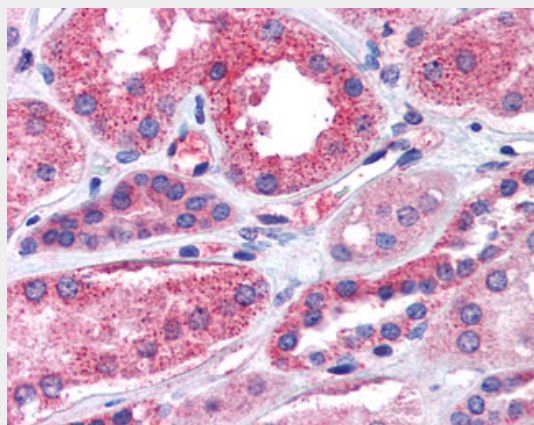
Expressed in brain, kidney, testis, liver and placenta with moderate expression in all other tissues. Detected on a majority of B-cells, T-cells, and natural killer cells (PubMed:12708969). Expressed on dendritic cells (PubMed:17785435)

CD316 / IGSF8 Antibody (Internal) - Protocols

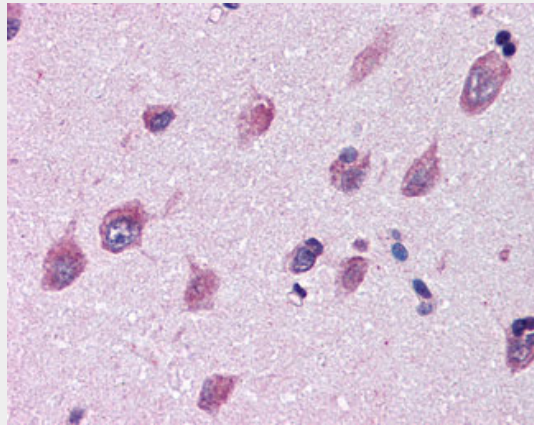
Provided below are standard protocols that you may find useful for product applications.

- [Western Blot](#)
- [Blocking Peptides](#)
- [Dot Blot](#)
- [Immunohistochemistry](#)
- [Immunofluorescence](#)
- [Immunoprecipitation](#)
- [Flow Cytometry](#)
- [Cell Culture](#)

CD316 / IGSF8 Antibody (Internal) - Images



Anti-IGSF8 antibody ALS11197 IHC of human kidney.



Anti-IGSF8 antibody ALS11197 IHC of human brain, cortex.

CD316 / IGSF8 Antibody (Internal) - Background

May play a key role in diverse functions ascribed to CD81 and CD9 such as oocytes fertilization or hepatitis C virus function. May regulate proliferation and differentiation of keratinocytes. May be a negative regulator of cell motility: suppresses T-cell mobility coordinately with CD81, associates with CD82 to suppress prostate cancer cell migration, regulates epidermoid cell reaggregation and motility on laminin-5 with CD9 and CD81 as key linkers. May also play a role on integrin- dependent morphology and motility functions. May participate in the regulation of neurite outgrowth and maintenance of the neural network in the adult brain.

CD316 / IGSF8 Antibody (Internal) - References

Stipp C.S.,et al.J. Biol. Chem. 276:40545-40554(2001).
Charrin S.,et al.Biochem. J. 373:409-421(2003).
Bonkobara M.,et al.Br. J. Dermatol. 148:654-664(2003).
Zhang W.,et al.Submitted (OCT-2000) to the EMBL/GenBank/DDBJ databases.
Ota T.,et al.Nat. Genet. 36:40-45(2004).